

LEGEND

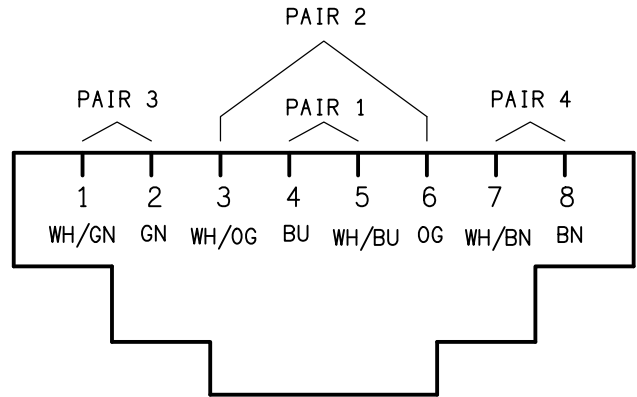
	ELECTRICAL SERVICES SWITCHBOARD.
	SWITCHBOARD / CONTROL PANEL NOT PROVIDED AS PART OF THE ELECTRICAL SUBCONTRACT.
	SINGLE POWER OUTLET.
	DOUBLE POWER OUTLET.
	DOUBLE POWER OUTLET C/W INTEGRAL USB CHARGERS.
	SPECIAL PURPOSE POWER OUTLET.
	SIGN OUTLET / CONNECTION.
	SINGLE PHASE ISOLATOR.
	THREE PHASE ISOLATOR.
	JUNCTION BOX.
	CONDUIT ROUTE.
	CABLE TRAY AS NOTED.
	ELECTRICAL PIT, TYPE AS NOTED.
	TELSTRA PIT.
	ELECTRICAL FLOOR BOX, TYPE AS NOTED.
	LIGHTING CONTROL SWITCH PANEL, TYPE AS NOTED.
	ONE-WAY LIGHT SWITCH.
	OCCUPANCY PRESENCE DETECTOR SWITCH.
	CIRCUIT LINE.
	SWITCH LINE.
	POWER CIRCUIT DESIGNATION. DENOTES DB AND CIRCUIT.
	LIGHTING CONTROL CHANNEL REFERENCE.
	MAIN DISTRIBUTION FRAME.
	ELECTRICAL EQUIPMENT AS NOTED.
	RJ45 CAT-6 COMMUNICATIONS OUTLET.
	NBN NETWORK TERMINATION DEVICE.
	NBN PREMISES CONNECTION DEVICE.
	ELECTRIC VEHICLE CHARGER.
	AUTO DOOR ENTRY PUSH BUTTON.
	AUTO DOOR EXIT PUSH BUTTON.
	AUTO DOOR MOTOR / CONTROLLER.
	SUPPLY AUTHORITY CODE COMPLIANT LV MAXIMUM DEMAND TARIFF METER.
	METERING TEST BLOCK METER.
	CONTACTOR.
	GENERATION SIGNALLING DEVICE.
	DEMAND RESPONSE SITE CONTROLLER.
	DEMAND EV CTs.
	ELECTRIC VEHICLE CHARGING ISOLATION SWITCH.

LEGEND

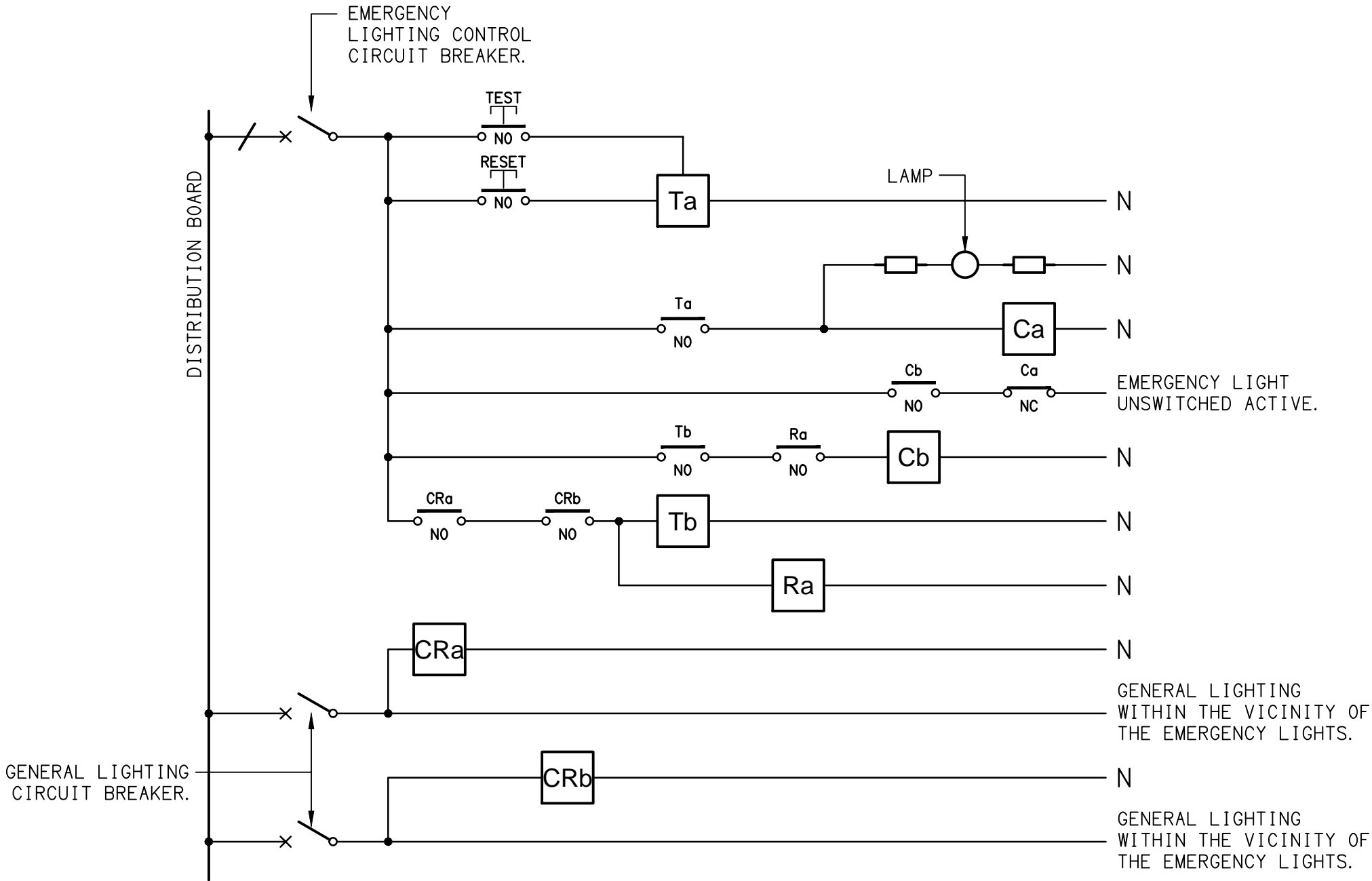
	CIRCUIT BREAKER C/W SHORT TRIP.
	FUSE.
	SINGLE PHASE.
	THREE PHASE.
	CURRENT TRANSFORMER C/W REMOVABLE LINK.
	FUSE LINK.
	COMBINED FUSE SWITCH.
	CIRCUIT BREAKER.
	ISOLATOR.
	RESIDUAL CURRENT DEVICE.
	CONTACTOR - NORMALLY OPEN.
	CONTACTOR - NORMALLY CLOSED.
	REFER TO DETAIL NOTED FOR THE AREA SHOWN HATCHED. ADDITIONAL OUTLETS & FITTINGS MAY BE SHOWN ON DETAIL.
	E1: GENERAL LED EMERGENCY LIGHT.
	EX: EMERGENCY LED EXIT LIGHT.
	L1: 30W CARPARK LIGHT MOUNTED ON A 4m HIGH POLE.
	L2: 600 x 600 RECESSED FLAT PLATE.
	L3: 300 x 600 RECESSED FLAT PLATE.
	L4: AMENITY RECESSED DOWNLIGHT.
	L5: RECESSED DOWNLIGHT.
	L6: RECESSED DOWNLIGHT.
	L7: RECESSED DOWNLIGHT.
	L8: DECORATIVE SUSPENDED PENDANT.
	L9: DECORATIVE SUSPENDED PENDANT.
	L10: DECORATIVE SUSPENDED PENDANT.
	L11: DECORATIVE SUSPENDED PENDANT.
	L12: 2400 LONG ROD SUSPENDED EXTRUSION LIGHT.
	L13: 5400 LONG ROD SUSPENDED EXTRUSION LIGHT.
	L14: 5400 LONG ROD SUSPENDED EXTRUSION LIGHT.
	L15: 150W CARPARK LIGHT MOUNTED ON A 9m HIGH POLE.
	L16: 50W CARPARK LIGHT MOUNTED ON A 9m HIGH POLE.
	L17: EXTERNAL WALL LIGHT TO REPLACE EXISTING.

EQUIPMENT:

TEST – TEST PUSH BUTTON MOUNTED ON THE DISTRIBUTION BOARD ESCUTCHEON.
RESET – RESET PUSH BUTTON MOUNTED ON THE DISTRIBUTION BOARD ESCUTCHEON.
LAMP – AMBER TEST INDICATING LAMP MOUNTED ON THE DISTRIBUTION BOARD ESCUTCHEON.
Ta – ADJUSTABLE 0-3 HOUR TIMED RELAY.
Tb – 15 MINUTE RUN-ON TIMER TO OPERATE UPON THE RETURN OF MAINS POWER.
Cx – CONTACTOR x.
CRx – CONTROL RELAY x.
Rx – RELAY x.



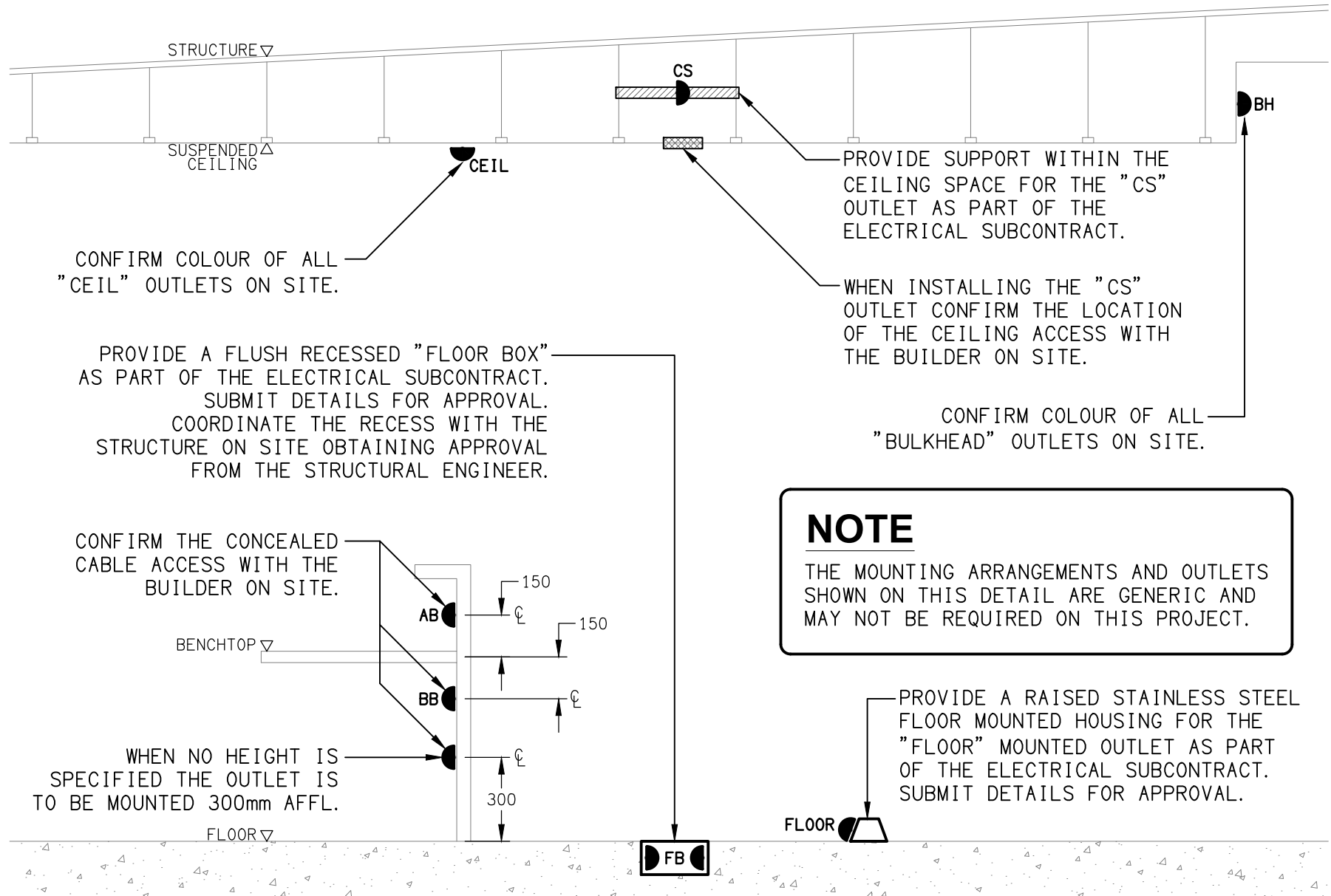
SCHEMATIC
RJ45 PINOUT CONFIGURATION
NOT TO SCALE



NOTES

- THE EMERGENCY LIGHT UNSWITCHED ACTIVE / GENERAL LIGHTING SWITCHED ACTIVE CIRCUIT ARRANGEMENT AND CONTROL IS TYPICAL FOR ALL CIRCUITS SUPPLYING EMERGENCY LIGHTS.
- PROVIDE ADDITIONAL CONTROL RELAYS (CRx) CONFIGURED AS PER CRa AND CRb FOR ALL ADDITIONAL LIGHTING CIRCUITS THAT SUPPLY LIGHTS IN THE VICINITY OF THE EMERGENCY LIGHTS.

SCHEMATIC
EMERGENCY LIGHTING
NOT TO SCALE



DETAIL
TYPICAL OUTLET MOUNTINGS
NOT TO SCALE